

USB to Serial Converter

User Manual

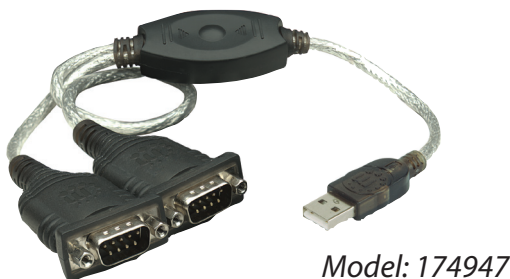
Models 151283, 151566, 151801, 151832, 151849,
151856 ,151917, 174947, 205146 & 205153



Model: 151566



Model: 205146



Model: 174947



manhattanproducts.com



Thank you for purchasing this Manhattan® USB to Serial Converter (Models 151283, 151566, 151801, 151832, 151849, 151856, 151917, 174947, 205146, and 205153). Some features of this product are:

- Plug-and-play
- Hot-swappability
- Three-Year Warranty (For a complete list of country-specific warranties, go to manhattanproducts.com/warranty.)

System Requirements

- USB port
- Windows XP/Vista/7/8/8.1/10 or Linux or Mac 9.x/10.x or above

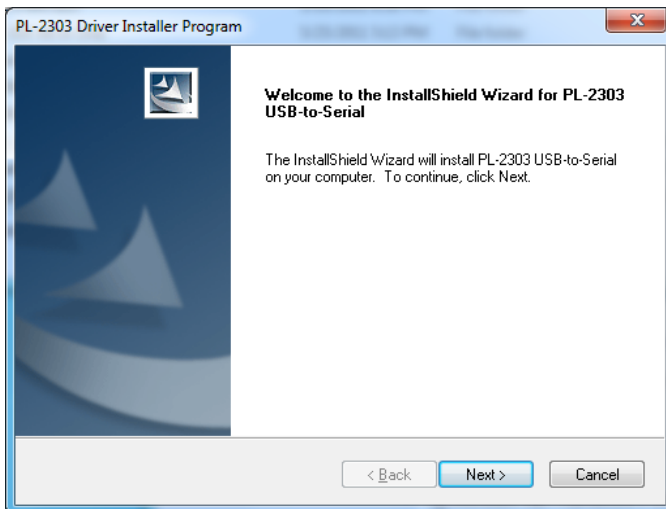
Package Contents

- USB to Serial Converter
- User manual and driver CD

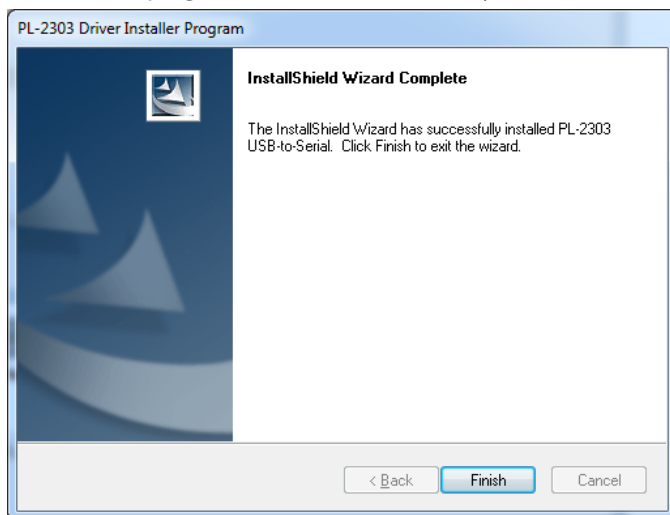
NOTE: The instructions for this manual show the driver installation of a Serial Converter with a Prolific chipset – “PL-2303 USB to Serial”. The images in this manual refer to the steps for Windows 7 users. The procedures and instruction screens for other chipsets and operating systems may vary slightly. Some screen images have been modified to fit the format of this manual.

To Install the Driver

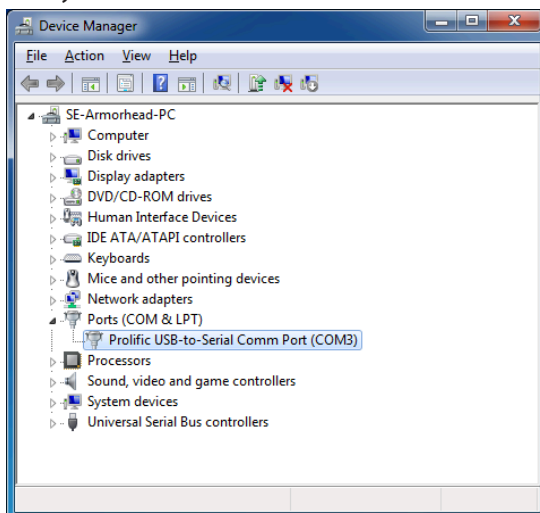
1. Before plugging the converter in to the computer, load the included driver CD and double-click “PL-2303 Driver Installer Program” to display the Welcome screen of the InstallShield Wizard. Click Next.



2. The Setup Status screen will display to indicate the progress of the installation. When the InstallShield Wizard Complete screen (below) displays, click Finish. Note: If you inadvertently connected the converter to the PC while running the driver installation, unplug it and re-connect so the system can detect it.



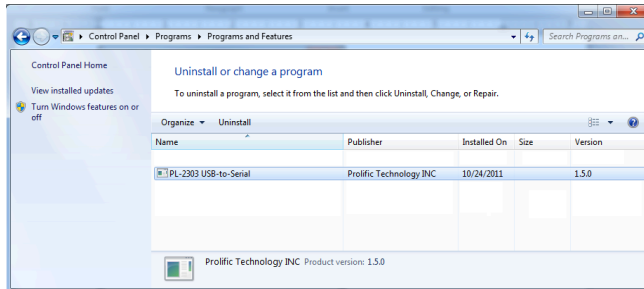
3. With the USB to Serial Converter connected to the PC USB port, Windows should detect the driver as "Prolific USB-to-Serial Comm Port." Go to Device Manager and check for the "Prolific USB-to-Serial Comm Port" device and the COM port number assigned by Windows.



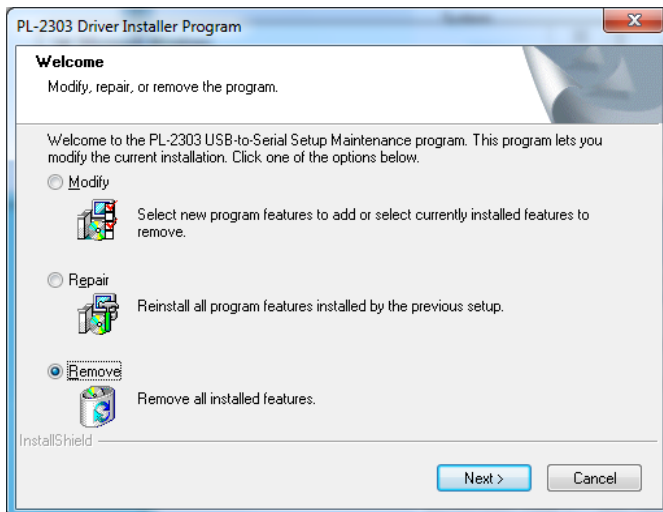


To Uninstall the Driver

1. On your desktop, go to Start / Control Panel / Uninstall a Program (Add or Remove Programs). Select/highlight “PL-2303 USB-to-Serial” and click Uninstall (Remove).

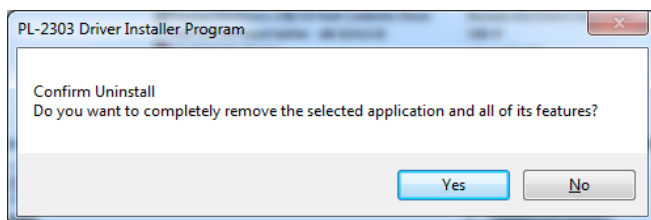


2. InstallShield Wizard will then start the maintenance program and prompt you to choose modify, repair or remove the driver. Click Remove, then Next to begin the driver uninstall.

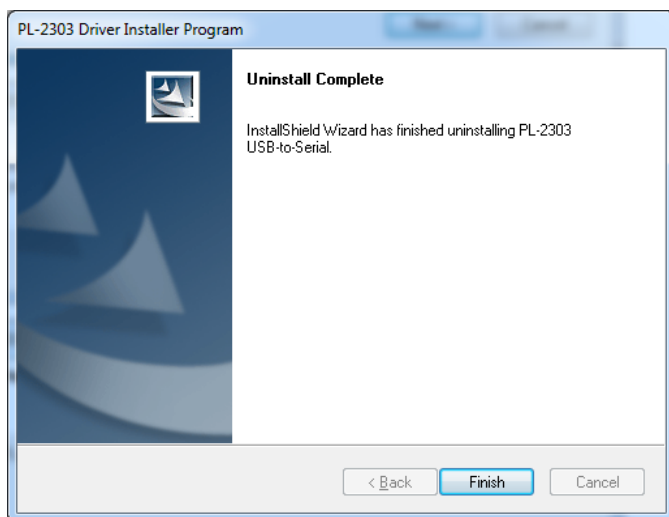




3. The InstallShield Wizard will prompt you to confirm the uninstall. Click Yes to continue.



4. Wait for the InstallShield Wizard to complete the uninstall process. When the Uninstall Complete screen displays, click Finish to end the program. Wait a few seconds more until the "PL-2303 USB-to-Serial" program is removed from the Control Panel Uninstall (Add or Remove Programs) program list.





© IC Intracom. All rights reserved.

Manhattan is a trademark of IC Intracom, registered in the U.S. and other countries.
All products mentioned are trademarks or registered trademarks of their respective owners.