

IP-COM

Install Guide



Access Controller

The first time you use this product, please read this Install Guide carefully. For more information, please visit our website at <http://www.ip-com.com.cn>.

1 Open the Package

✕ If any item is incorrect, missing or damaged, contact the place of purchase for replacement immediately.



AC1000



Power Cord

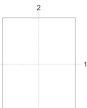


Install Guide



Anti-slip Footpad

* Product pictures and images are for reference only. Detailed information is consistent with the final product.



十字折示意图

210.00 mm

105.00 mm

148.50 mm

297.00 mm



CE Mark Warning

This is a Class A product. In a domestic environment, this product may cause radio interference, in which case the user may be required to take adequate measures.

For Pluggable Equipment, the socket-outlet shall be installed near the equipment and shall be easily accessible.

WARNING: The mains plug is used as disconnect device, the disconnect device shall remain readily operable.

The Product is designed for IT Power Distribution System.

NOTE: (1) The manufacturer is not responsible for any radio or TV interference caused by unauthorized modifications to this equipment. (2) To avoid unnecessary radiation interference, it is recommended to use a shielded RJ45 cable.



FCC Statement

This equipment has been tested and found to comply with the limits for a Class A digital device, pursuant to part 15 of the FCC Rules. These limits are designed to provide reasonable protection against harmful interference when the equipment is operated in a commercial environment. This equipment generates, uses, and can radiate radio frequency energy and, if not installed and used in accordance with the instruction manual, may cause harmful interference to radio communications. Operation of this equipment in a residential area is likely to cause harmful interference in which case the user will be required to correct the interference at his own expense.

FCC Caution: Any changes or modifications not expressly approved by the party responsible for compliance could void the user's authority to operate this equipment.

This device complies with part 15 of the FCC Rules. Operation is subject to the following two conditions: (1) This device may not cause harmful interference, and (2) this device must accept any interference received, including interference that may cause undesired operation. The manufacturer is not responsible for any radio or TV interference caused by unauthorized modifications to this equipment.

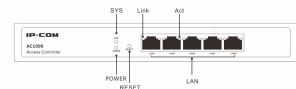
NOTE: (1) The manufacturer is not responsible for any radio or TV interference caused by unauthorized modifications to this equipment. (2) To avoid unnecessary radiation interference, it is recommended to use a shielded RJ45 cable.

Manufacturer: Shenzhen IP-COM Networks Co., Ltd.
Address: Room 151, Unit A, First Floor, Tower E3, No. 101, Zhongshanyuan Road,
Nanshan District, Shenzhen, China, 518052.
Tel: (86 755) 2765 5069
Email: info@ip-com.com.cn
<http://www.ip-com.com.cn>

© 2014 IP-COM Networks Co., Ltd. All rights reserved.
The documents, pictures, logos, design and other specifications, etc. in this reference only. To improve internal design, the documents, pictures, logos, design and other specifications, etc. in this reference only. To improve internal design, the documents, pictures, logos, design and other specifications, etc. in this reference only. To improve internal design, the documents, pictures, logos, design and other specifications, etc. in this reference only.



2 Get to Know Your Device



LED Light	Color	Status	Description
POWER	Green	Solid	Proper connection to power supply
	Green	Off	Improper connection to power supply or malfunction occurs
SYS	Green	Solid	The system is starting
	Green	Blinking	The system is functioning normally
Link	Orange	Solid	A valid link has been established on the corresponding port
	Orange	Off	No link is established on the corresponding port or malfunction occurs
Act	Green	Blinking	Data transmission is occurring on the corresponding port
	Green	Off	Data transmission is not occurring on the corresponding port

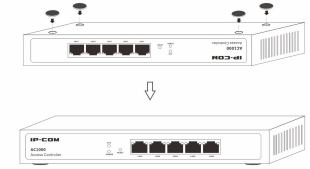


Power Interface

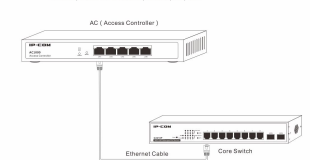
Port/Interface / Button	Number	Description
LAN	5	10/100/1000M auto-negotiation RJ45 ports for connecting to Ethernet devices, like PCs, APs, switches, routers, etc.
100-240V 50/60Hz	1	AC power interface for connecting to the included power cord for power supply
RESET	1	Press it with something like a needle for 6 seconds and then release, about 45 seconds later, this device will be restored to factory default settings.

3 Install Your Device

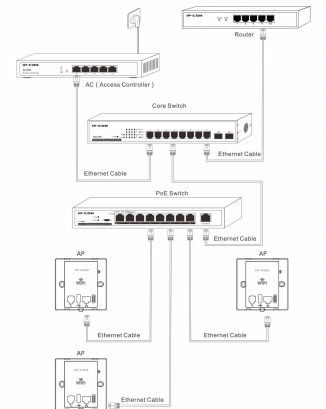
Step 1: Attach four footpads to the corresponding circular grooves on the bottom of the access controller, and then place it face up on the desktop.



Step 2: Connect the LAN port of the access controller to the remote Ethernet device, such as a switch, router, AP, etc.

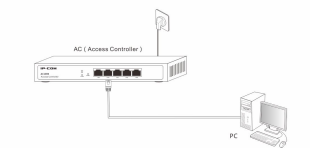


Step 3: After checking your network topology, connect the included power cord to the access controller for power supply.

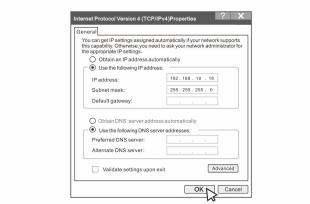


4 Log in to Your Device

Step 1: Connect your PC to one of the LAN ports of the access controller directly or to the switch which has been connected to the access controller.

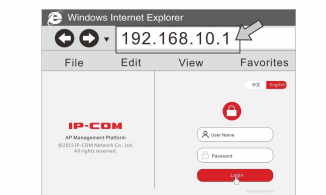


Step 2: Set your PC to an IP address within the following range: 192.168.10.X (2-254), and with the subnet mask of 255.255.255.0.



Step 3: Launch a web browser, input 192.168.10.1 in the address bar and press Enter.

Step 4: Type in the default username and password (admin for both) and then click Login.



Step 5: Then you can go to this device's web page to view corresponding configuration information or configure relevant settings.