

## Install Guide

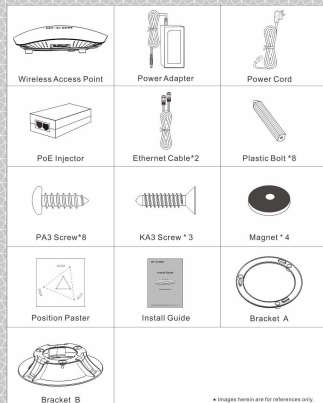


Indoor Access Point

Please read this Install Guide carefully before you start. For information that is not covered here, please access our website <http://www.ip-com.com.cn>.

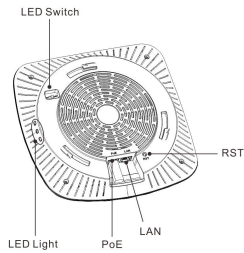
## Package Contents

If any item is incorrect, missing, or damaged, please contact your reseller for immediate replacement.



\* Images herein are for reference only.

## 1 Back Panel



## LED Lights

LED Light	Status	Description
Power	Solid	Proper connection to power supply
	Blinking	The device is functioning normally
	Off	Improper connection to power supply, malfunction occurs or the LED switch (ON/OFF) is disabled.
2.4G	Solid	2.4G WiFi is enabled.
	Blinking	Data is being transmitted.
	Off	Improper connection to power supply, malfunction occurs or the LED switch (ON/OFF) is disabled.
11AC (Only applies to part of product models)	Solid	11AC WiFi is enabled.
	Blinking	Data is being transmitted.
	Off	Improper connection to power supply, malfunction occurs or the LED switch (ON/OFF) is disabled.

## Button &amp; Interface

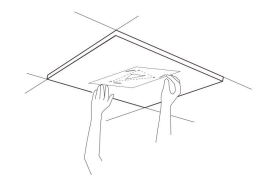
Button & Interface	Description
ON/OFF (LED switch)	ON: All LED lights are turned on. OFF: All LED lights are turned off.
RST	Pressing it for 7 seconds restores this device to factory default settings and restarts the device.
PoE	Used for power supply and data transmission
LAN	Used for connecting to the PC, switch or any other Ethernet device

## 3 Hardware Installation

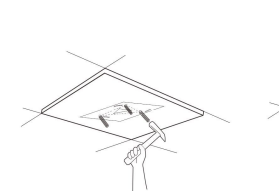
## Step 1: Install the bracket

## Method One: Wall / Ceiling Installation

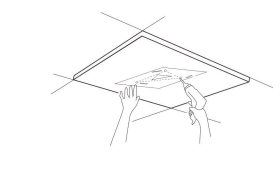
- Paste the position paster on to the location (on the wall or ceiling) which you've selected.



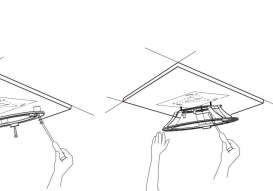
- Knock the three plastic bolts on to the wall or ceiling where you've drilled the holes.



- In terms of the bracket you've selected, drill three holes on the wall or ceiling according to holes on the position paster.



- Insert the screws into the bracket and screw them into the plastic bolts.

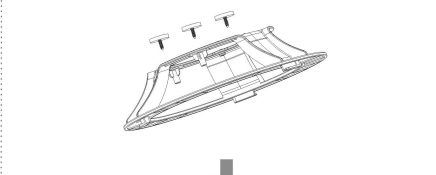


Bracket A

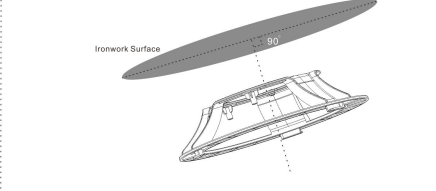
Bracket B

## Method Two: Magnet Installation (Bracket B).

- Place three magnets on corresponding concave surfaces of Bracket B, fix magnets onto the Bracket B with screws.



- Then attach the bracket (installed with magnets) tightly onto the ironwork surface.



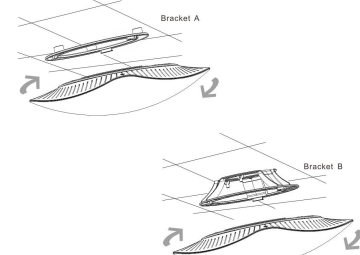
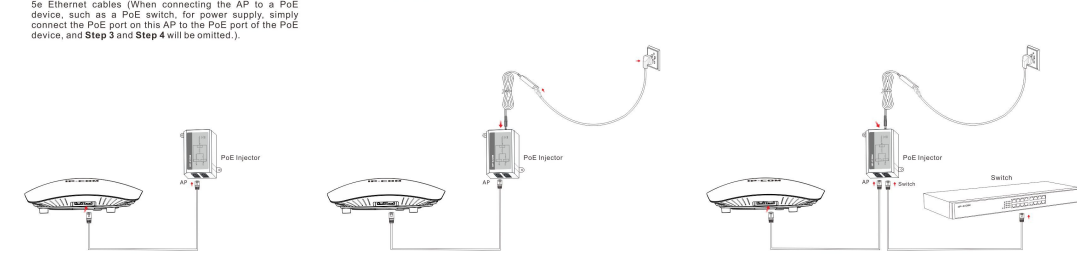
Note: In poor-ventilated environment or when the average temperature indoors exceeds 28°C, it is advisable to use Bracket B for the purpose of good ventilation and heat dissipation.

**Step 2:** Connect the PoE port on this device to the AP port of the PoE injector with an Ethernet cable. For optimum performance and transmission distance, it is advisable to use cat 5 or cat 5e Ethernet cables. (When connecting the AP to a PoE device, such as a PoE switch, for power supply, simply connect the PoE port on this AP to the PoE port of the PoE device, and Step 3 and Step 4 will be omitted.)

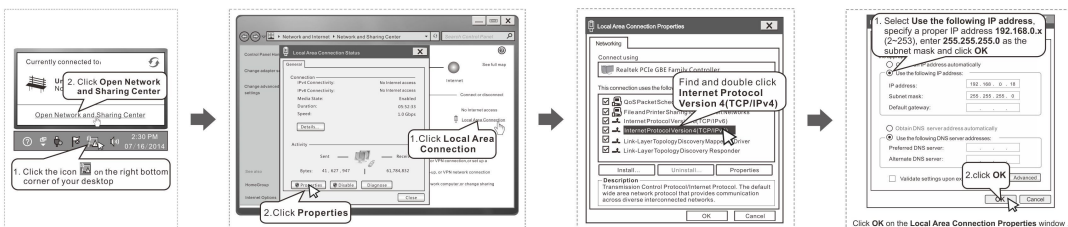
**Step 3:** Connect the included power adapter to the PoE injector, connect the power adapter to the included power cord and plug the power cord into an outlet.

**Step 4:** Connect the Switch port of the PoE injector to the remote switch with an Ethernet cable.

**Step 5:** Fix the device onto the bracket.

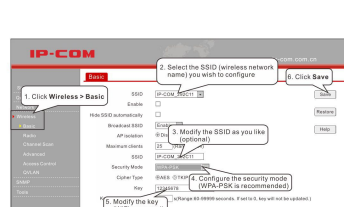
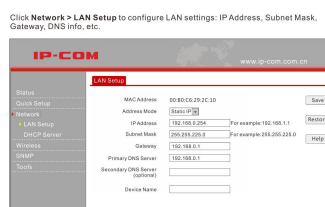
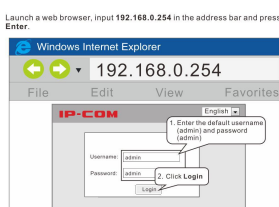


## 4 Configure PC (Here we take Windows 7 OS for example and steps are similar to the following in other operation systems.)



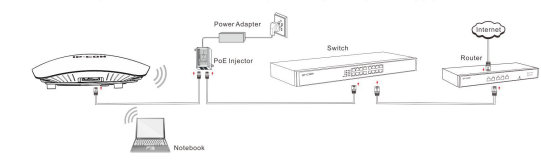
## 5 Configure AP

**Tip:** Please connect the LAN port of this AP to your PC with an Ethernet cable first! If no Ethernet cables available, you can use wireless devices, like smart phones, to connect to this AP wirelessly and then log in to its web page to configure it.

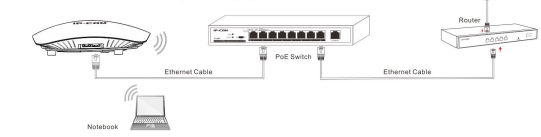


## 2 Network Topology

## Connect to a power outlet with the included power adapter for power supply



## Connect to a PoE device for power supply



Note: When it's connected to a PoE device for power supply, please connect the PoE port on this AP to the PoE port of the PoE device.

## FAQs

- Q1: I enter the device's LAN IP address in the web browser but cannot access its web manager. What should I do?  
A1: This device may not cause harmful interference, use (2) the device must accept any interference received, including that which may cause undesired operation.  
Q2: What should I do if I can't find the wireless signal?  
A2: 1. Ensure the wireless feature on your PC is enabled.  
2. Ensure the device is receiving electrical power.  
3. Ensure no huge metal objects or other severe interferences (cordless telephones or microwaves, etc.) around.



**CE Mark Warning**  
This device may not cause harmful interference, use (2) the device must accept any interference received, including that which may cause undesired operation.



**FCC Statement**  
This device is restricted to be used in the indoor.

This device complies with Part 15 of the FCC Rules. Operation is subject to the following two conditions: (1) This device may not cause harmful interference, and (2) this device must accept any interference received, including that which may cause undesired operation.  
Copyright © 2015 IP-COM. All rights reserved. No part of this publication may be reproduced without prior written permission from IP-COM.  
NOTE: (1) The manufacturer is not responsible for any radio or TV interference caused by unauthorized modifications to this equipment. (2) To avoid unnecessary radiation interference, it is recommended to use a shielded RJ45 cable.  
SHENZHEN IP-COM NETWORKS CO., LTD.  
Room E3, No. 1001, Zhongyuan Road, Nanshan District, Shenzhen, China, 518052  
Phone: (86) 755 76526808  
Email: marketing@ip-com.com.cn  
info@ip-com.com.cn  
Website: www.ip-com.com.cn

© 2015 IP-COM Networks Co., Ltd. All rights reserved.  
This document (including the text and product specifications, etc.) is for reference only. It does not constitute any part of the product. IP-COM reserves the right to make changes to the product described in this document without obligation to notify any person or organization of such revisions or changes.

Note: To reduce interference among devices, you can configure TX power by clicking Wireless > Advanced. And when multiple APs are used simultaneously, you can use the unified management software designed by IP-COM to manage all APs uniformly.