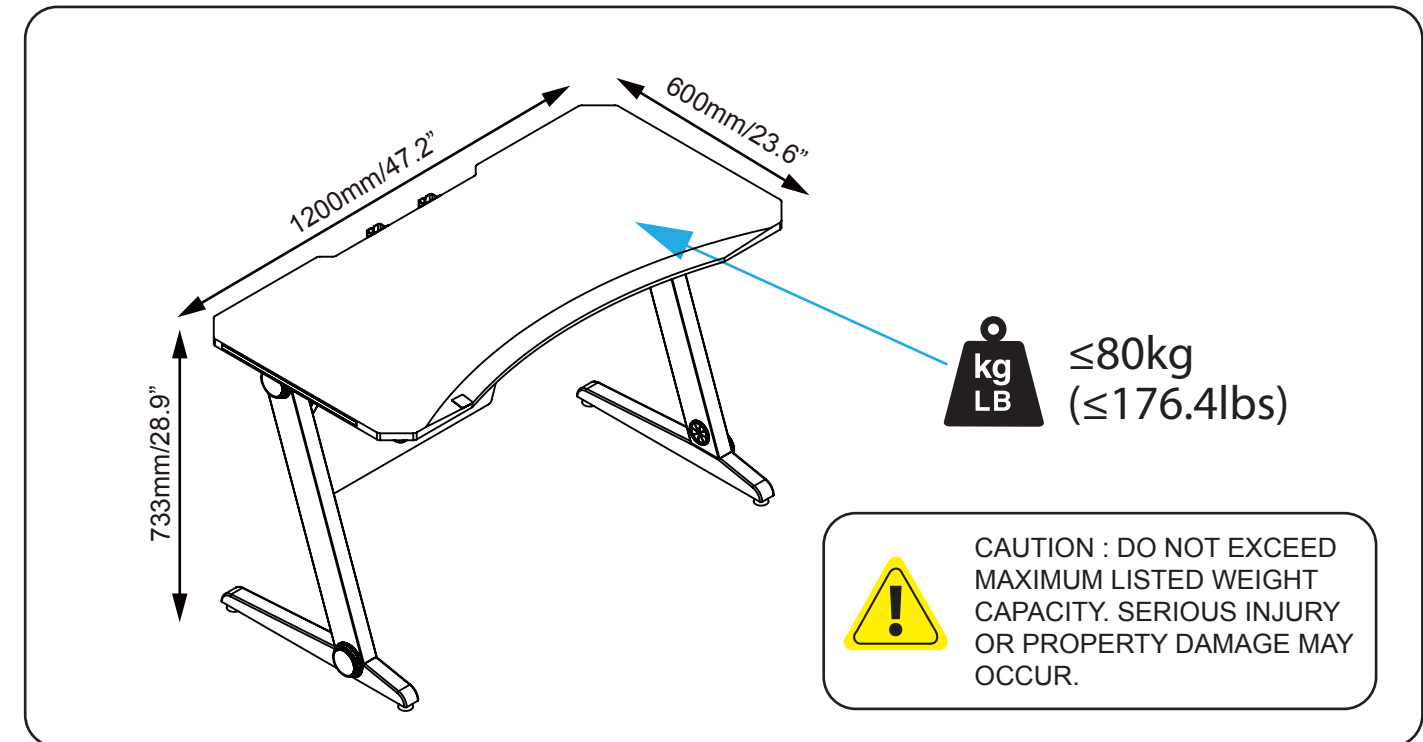
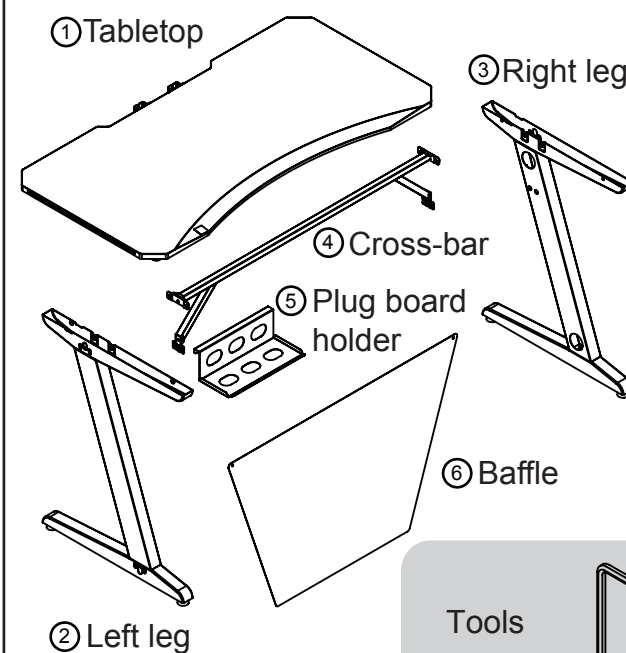


Gaming Desk

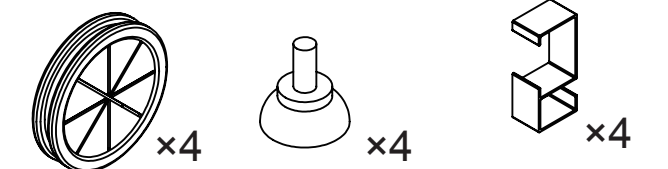
MOUNTING INSTRUCTIONS



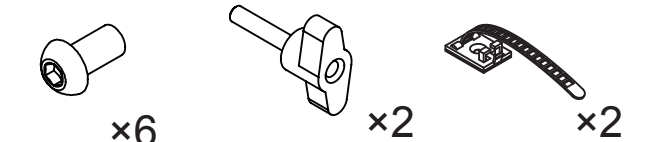
PARTS LIST



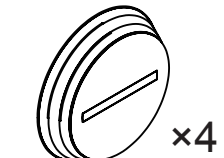
A) Cable hole B) Adjustable pad C) Cable clamp



D) M6 \times 12mm E) Knob F) Cable clamp

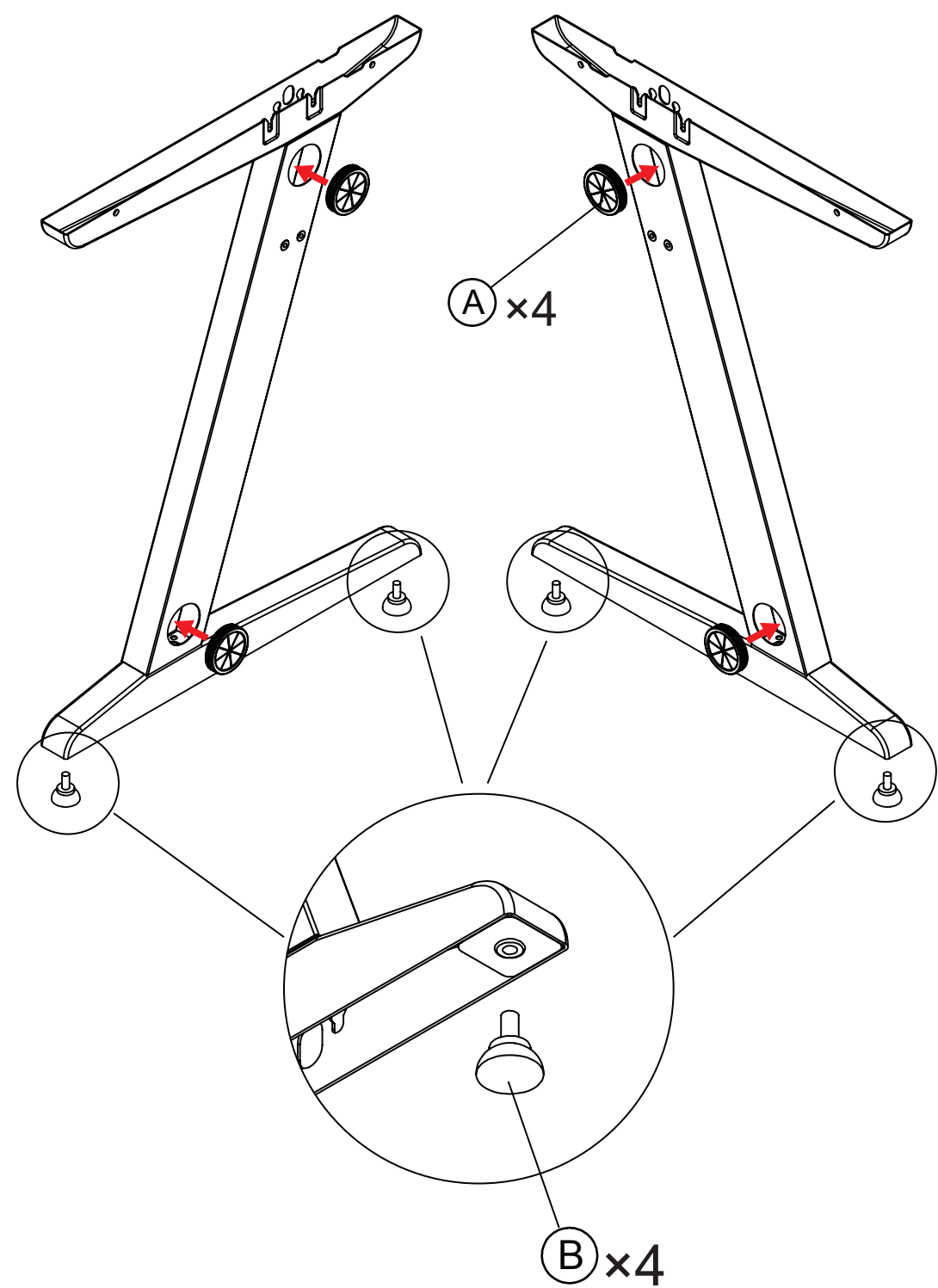


G) Decorative cover



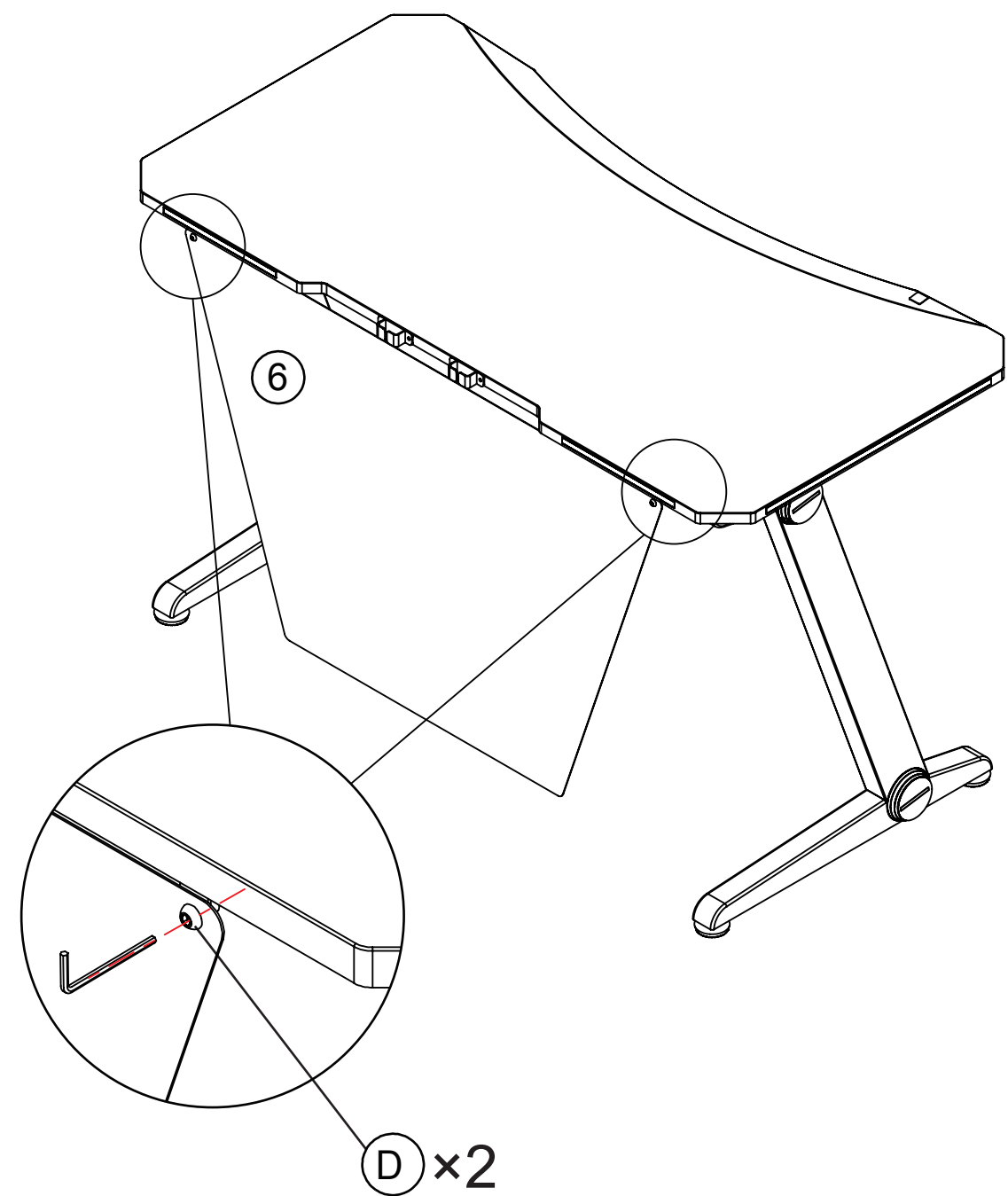
INSTALLATION STEPS

1



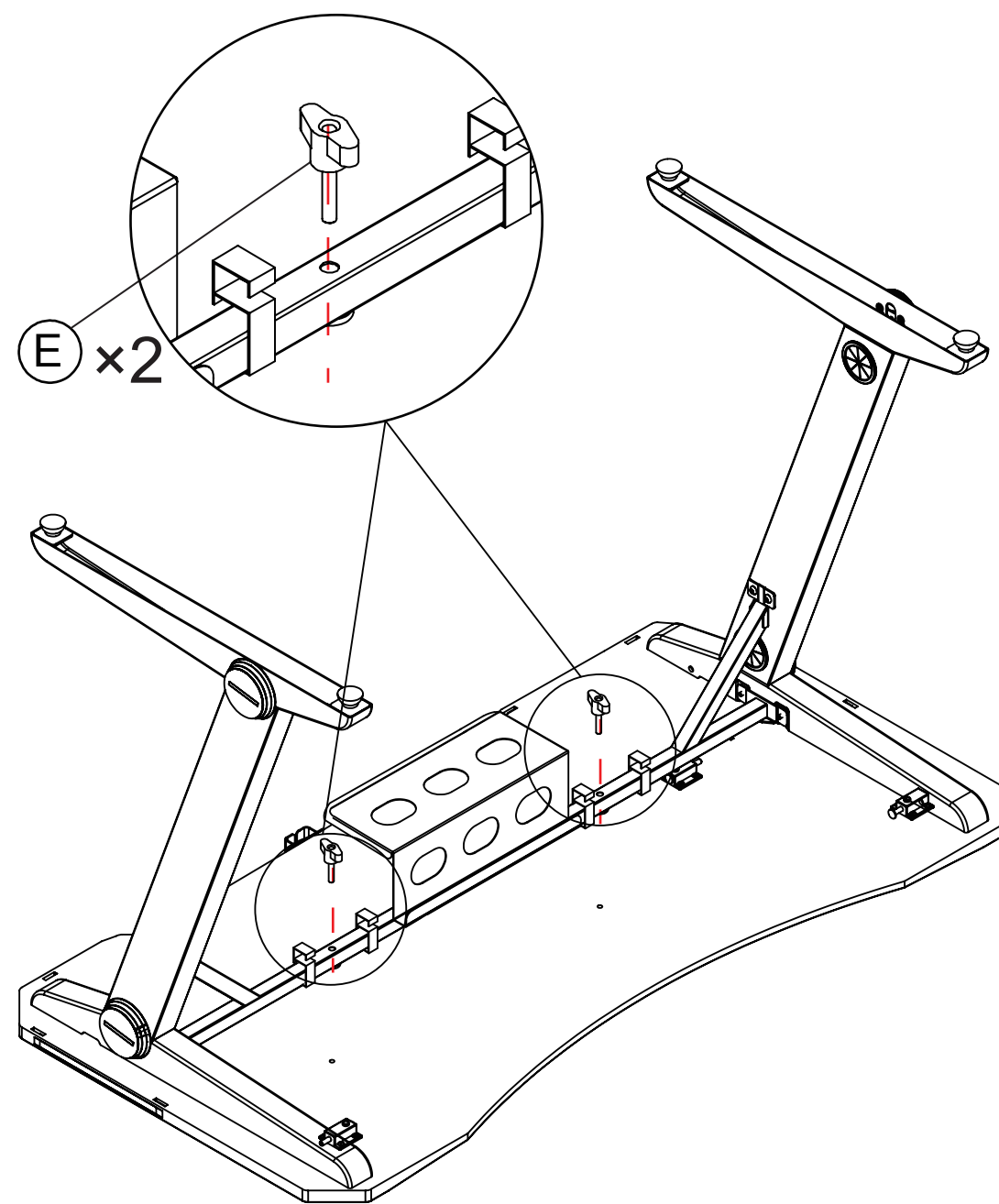
Put cable hole (A) (x4) into the hole
Swirl adjustable pad (B) (x4) into the hole

6



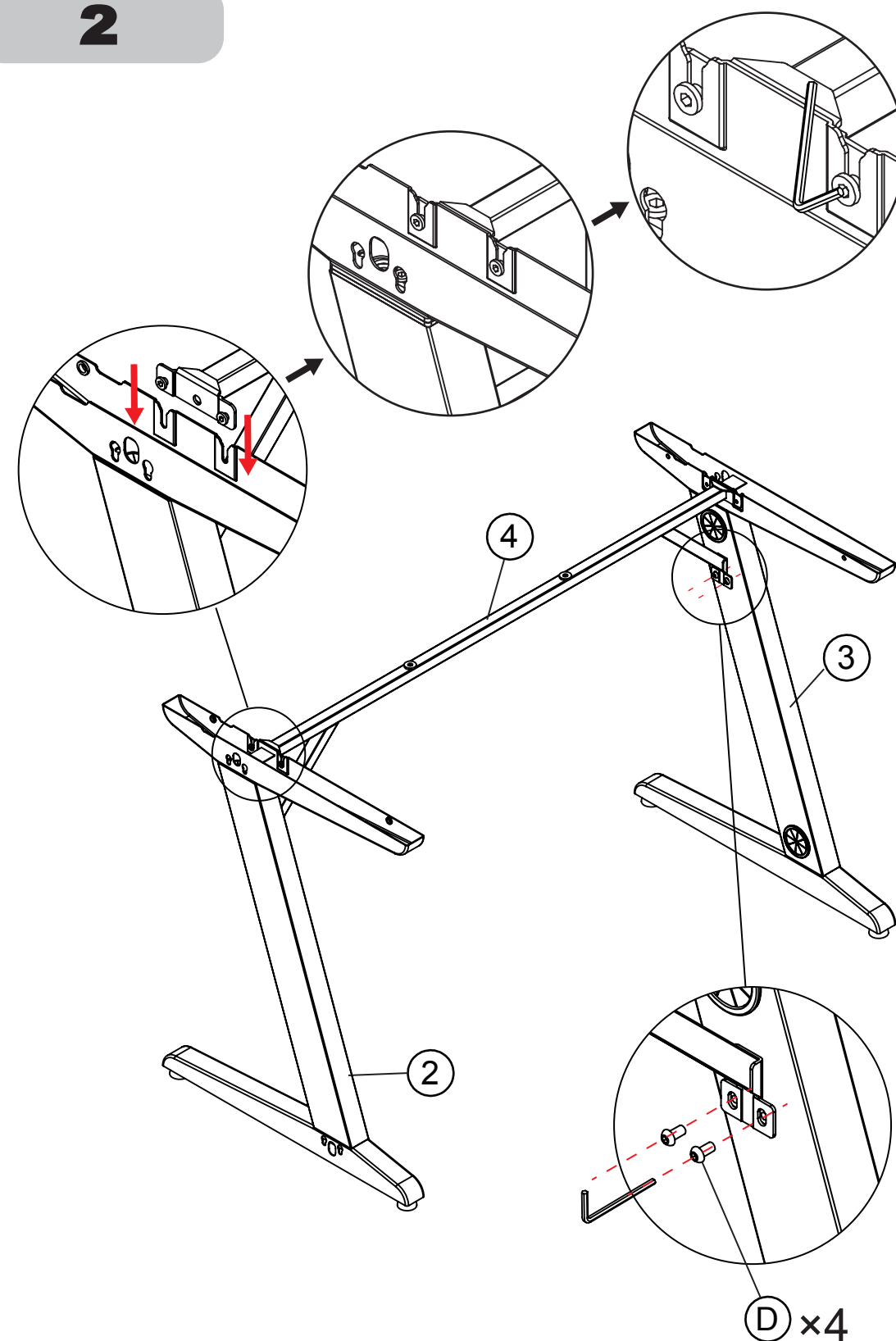
Use (D) (x2) to install baffle (6)
Then the desk is ready to use.

5



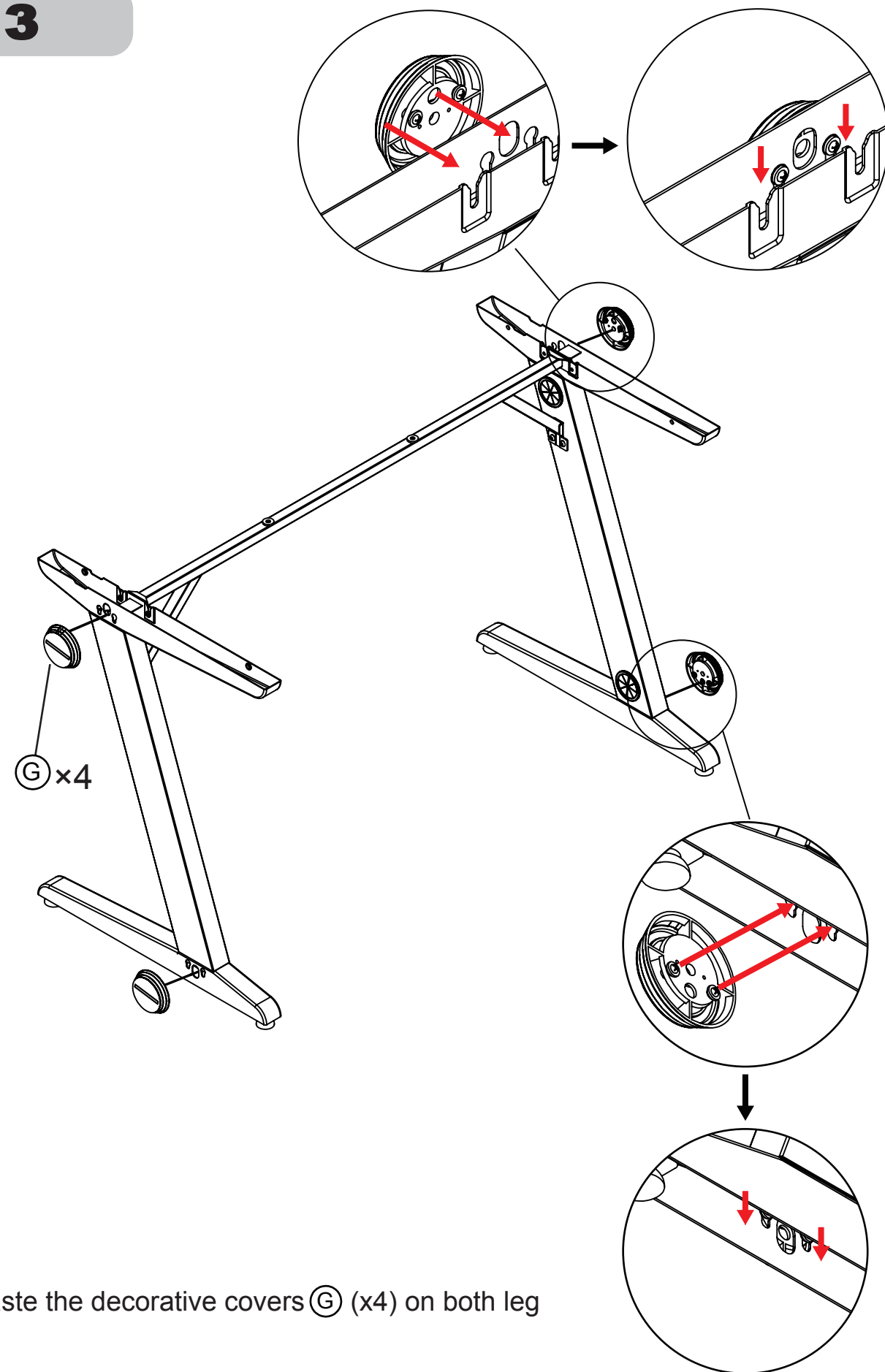
Tighten (E) (x2) to fix the cross bars and the tabletop

2



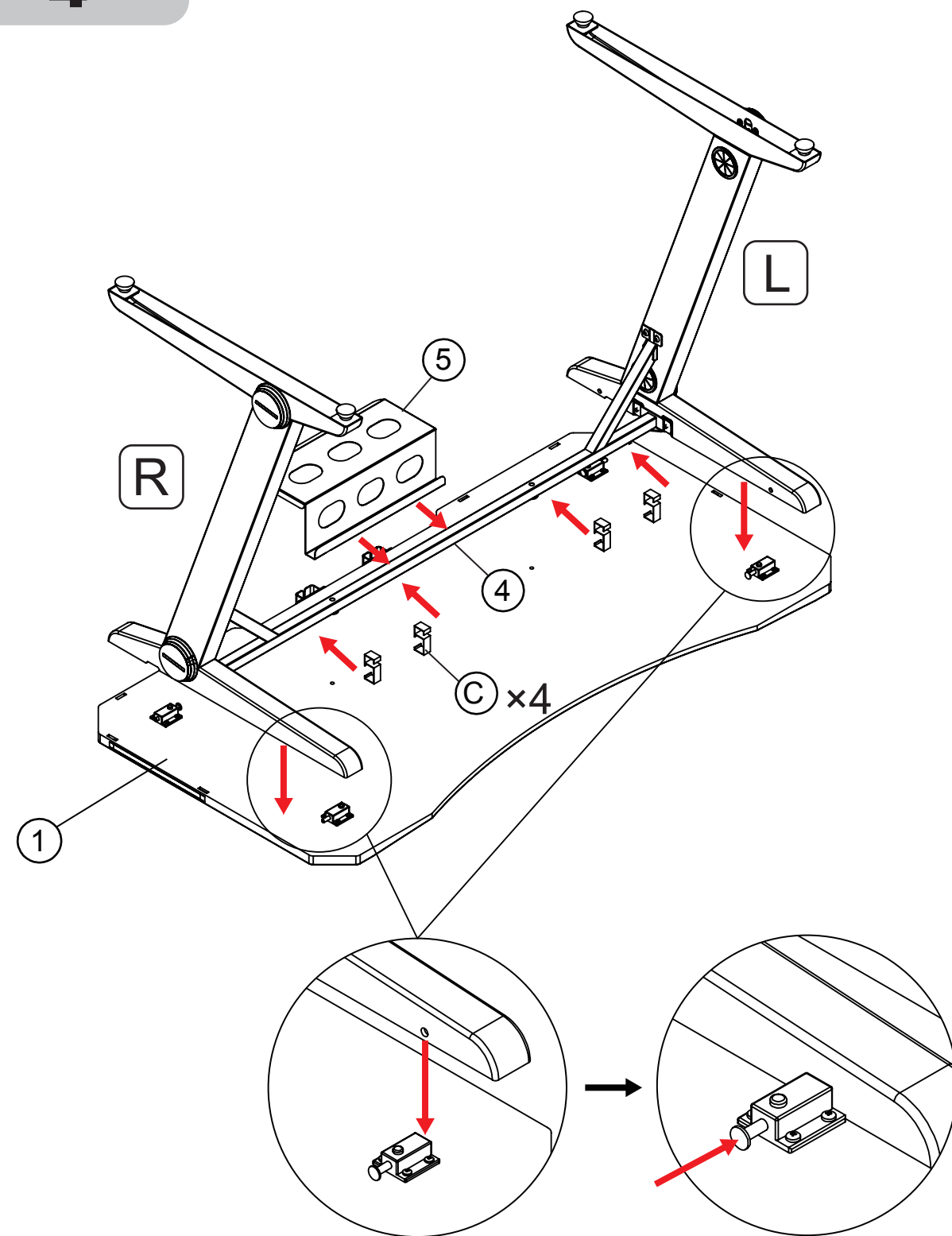
Use (D) (x4) to connect the left leg (2) & right leg (3) with cross-bar (4)
Tighten the screws on the cross-bar with an allen key

3



Paste the decorative covers ⑥ (x4) on both leg

4



Hang plug board holder ⑤ and cable clamps ③ (x4) on cross-bar ④
Gently press the spring bolt lock, the desktop can be installed