

USB TO RS485 CONVERTER USER MANUAL

MODEL 150439

Thank you for purchasing this MANHATTAN® USB to RS485 Converter, Model 150439.

Automatically detected and installed as a native Com port, this handy device provides you with a cost-effective way to easily convert your RS485 industrial buses to a USB interface so you can expand your network without IRQ or DMA configuration.

See the back of this sheet for Installation Instructions.



MANHATTAN™

BRINGING COMPUTERS TO LIFE

MANHATTAN® offers a complete line of PC Components, Peripherals, Cables and Accessories. Ask your local computer dealer for more information or visit us online at www.manhattan-products.com

Copyright © MANHATTAN

All products mentioned are trademarks or registered trademarks of their respective owners.

CE FCC

MH-150439-UM-0110-01



- Quickly adds an RS485 connection to a single USB port
- Supports multiple modules when installed in a USB hub
- Hassle-free configuration of two-wire half duplex networks up to 1200 meters
- Windows compatible — Plug and Play; hot-swappable
- Lifetime Warranty

SPECIFICATIONS

STANDARDS /

CERTIFICATIONS

- CE, FCC, USB 1.0, USB 1.1, USB 2.0

CONNECTIONS

- USB port: type-A male
- RS232 port: 9-pin male
- RS232 port: 9-pin female (on adapter)
- RS485 port: 4-pin female (on adapter)

GENERAL

- 384-byte receive buffer
- Auto transmit control for 128 byte
- Transmission rate: 300 bps to 1 Mbps
- Max. network range: 1200 m
- Bus powered
- Over-current protection: 600 W between USB port and RS485
- FT232RL chipset

PHYSICAL

- Cable length: 80 cm (31.5 in.)
- Weight: 59.5 g (2.1 oz.)

SYSTEM REQUIREMENTS

- USB 1.1 or 2.0 port
- Windows 2000/XP/Vista/7

PACKAGE CONTENTS

- USB to RS485 Converter
- User manual and driver CD

WIRING CONFIGURATION:
RS485 PINOUT AT DB9 MALE

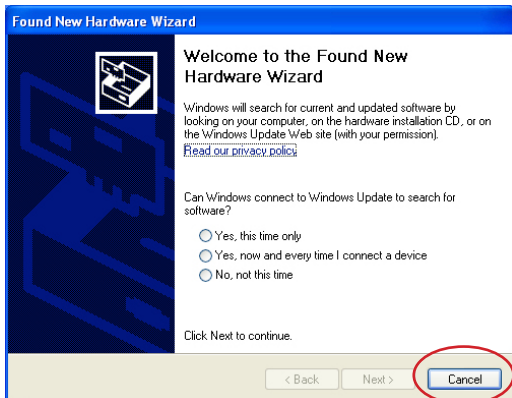
Pin #	RS485
1	485-
2	485+
5	GND



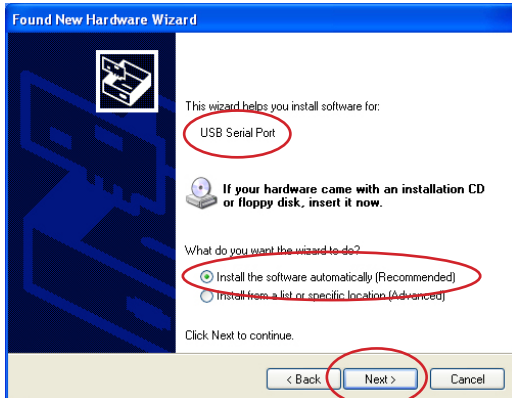
Included adapter

INSTALLATION INSTRUCTIONS

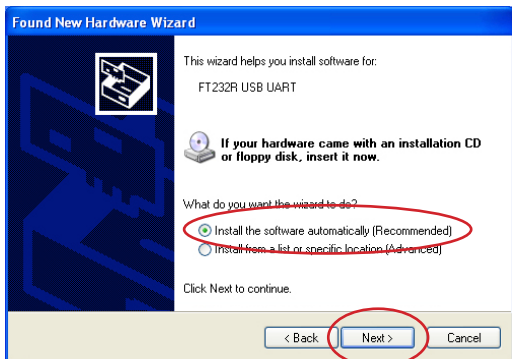
NOTE: These are Windows XP screen images. Those for updated systems are similar.



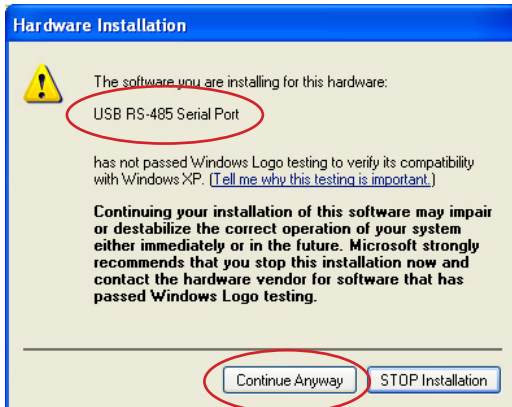
1. Insert the included driver CD in your CD-ROM drive and make your connection to a USB port. When the Welcome to the Found New Hardware Wizard screen displays (above), click "Cancel" to continue with the installation.



5. When the screen identifying "USB Serial Port" displays (above), select "Install the software automatically" and click "Next."



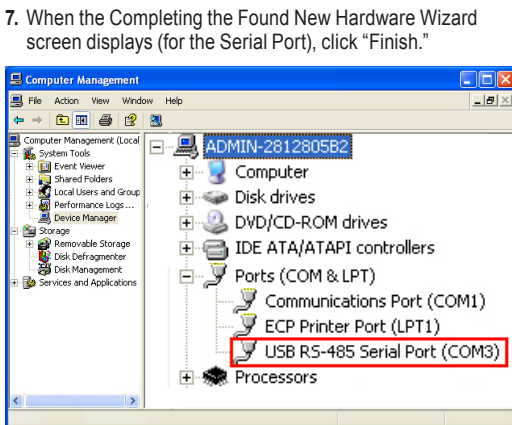
2. On the subsequent screen, select "Install the software automatically," then click "Next."



6. When the second Hardware Installation warning displays (referring to the Serial Port), click "Continue Anyway."



3. When the Hardware Installation warning displays (referring to the Serial Converter), click "Continue Anyway."
4. When the Completing the Found New Hardware Wizard screen displays (for the Serial Converter), click "Finish."



8. Open the Computer Management file to confirm that the device is listed, as shown above.