

IDE TO SATA 150 CONVERTER

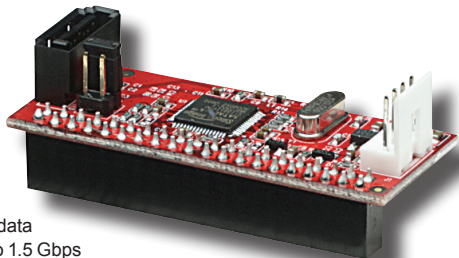
QUICK INSTALL GUIDE

MODEL 170598

Thank you for purchasing the MANHATTAN® IDE to SATA 150 Converter, Model 170598.

Connecting a SATA 150 drive with an IDE controller, it simplifies installations, helps control upgrade costs, and extends the service life of existing IDE connections.

Installation instructions are on the back of this sheet.



- Supports SATA 150 data transfer rates of up to 1.5 Gbps
- Compatible with most IDE devices
- Large drive support of over 137 GB
- Compatible with drives larger than 137 GB
- Miniature bridge takes up minimal space
- Lifetime Warranty

SPECIFICATIONS

Standards & Certifications

- FCC, CE, SATA 1.0a

General

- 48 bit LBA support
- Supports Spread Spectrum in receiver
- Support for drives larger than 137 GB
- Hardware bridge supports PC, Mac, Linux environments

Physical

- Dimensions: 59 x 25 x 22 mm (2.3 x 1 x 0.9 in.)
- Weight: 11.3 g (0.4 oz.)

Package Contents

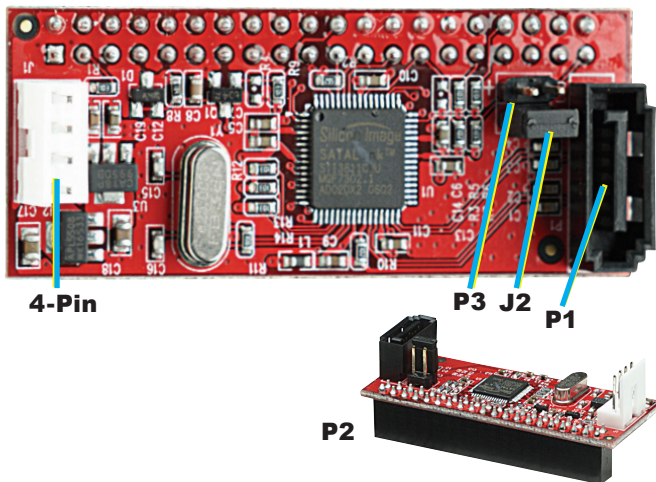
- IDE to SATA 150 Converter
- Quick install guide



MANHATTAN® offers a complete line of PC Components, Peripherals, Cables and Accessories. Ask your local computer dealer for more information or visit us online at **www.manhattan-products.com**

Copyright © MANHATTAN

All products mentioned are trademarks or registered trademarks of their respective owners.



INSTALLATION

1. Set the jumper on the IDE device (HDD, CD-RW, etc.) to Master mode.
2. Connect the 40-pin connector (P2) to the IDE device.
IMPORTANT: This converter must be connected to the IDE device before the converter is powered on.
3. Using the Y-type power cable, attach the 4-pin connector to the PC power supply.
4. Using the SATA cable, connect the 7-pin SATA connector (P1) to the SATA device.
5. Attach the 2-pin header (P3) to the front-panel HDD LED indicator.

NOTE 1: This device is not recommended for use with mobile rack installations.

NOTE 2: If your DVD drive doesn't perform properly after connections are made, remove the J2 jumper and set it to NC (no connect).